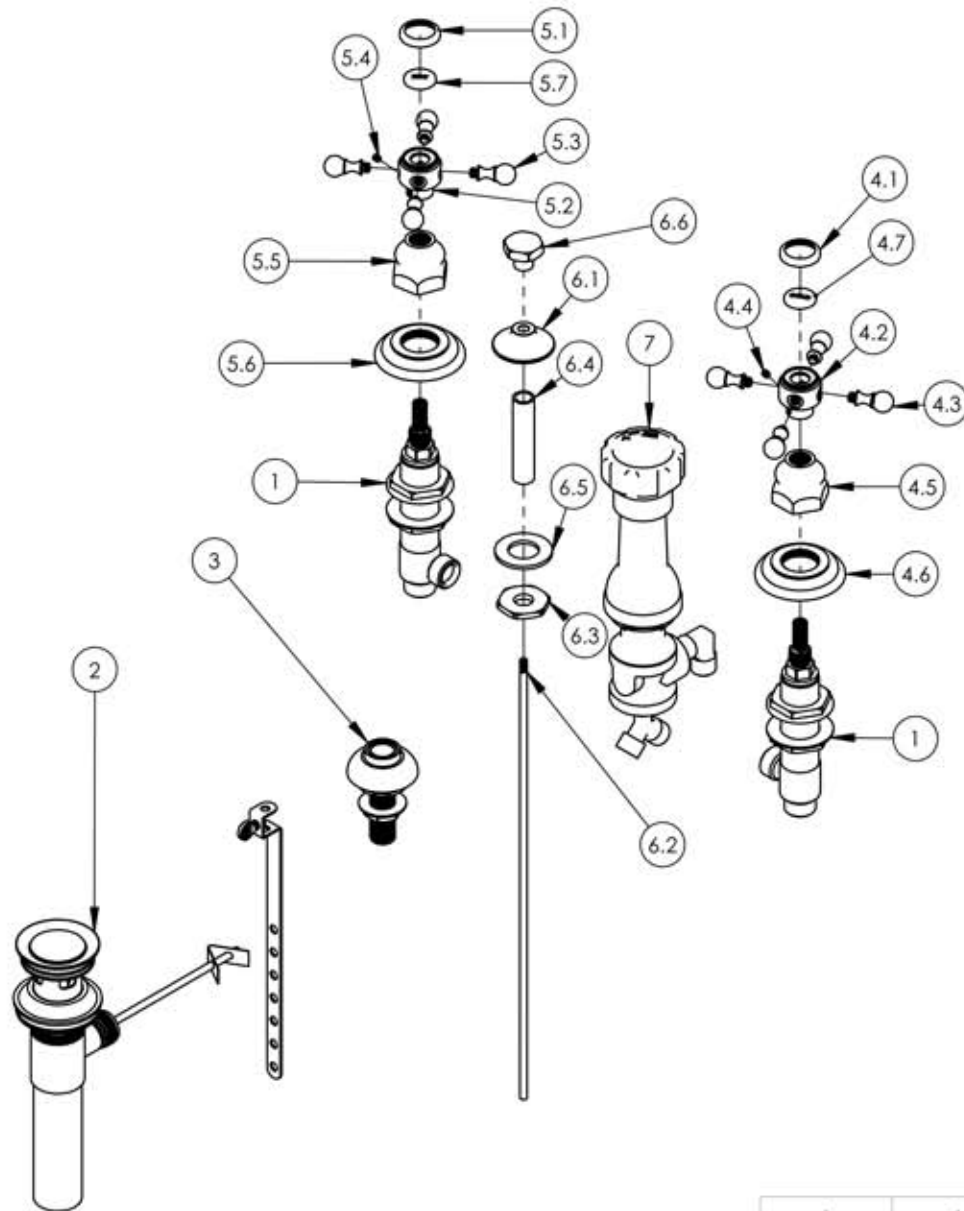


A

B

C

D



ITEM NO.	PART NUMBER	DESCRIPTION	QTY.
1	1-600	WIDESPREAD HOT AND COLD VALVES W/PLASTIC NUTS	1
2	3-046/00	POP-UP DRAIN ASSEMBLY (2-101, 2-102)	1
3	3-085/00	ASSY, BIDET SPRAYER	1
4	3-141C/00	CROSS HANDLE, HEX TRADITIONAL, 500 SERIES	1
4.1	10538/00	CAP RING FOR 500 SERIES BUTTON	1
4.2	10622/00	HUB FOR HANDLE, CROSS	1
4.3	10623/00	HANDLE FINIAL CROSS	4
4.4	92008	SET SCREW, POINT 8CUP -32UNC 3/16"L	2
4.5	10621/00	BASE HUB NUT	1
4.6	10619/00	ESCUTCHEON, TRADITIONAL LAV 1"-20	1
4.7	11098	PLASTIC BUTTON, COLD	1
5	3-141H/00	CROSS HANDLE, HEX TRADITIONAL, 500 SERIES	1
5.1	10538/00	CAP RING FOR 500 SERIES BUTTON	1
5.2	10622/00	HUB FOR HANDLE, CROSS	1
5.3	10623/00	HANDLE FINIAL CROSS	4
5.4	92008	SET SCREW, POINT 8CUP -32UNC 3/16"L	2
5.5	10621/00	BASE HUB NUT	1
5.6	10619/00	ESCUTCHEON, TRADITIONAL LAV 1"-20	1
5.7	11099	PLASTIC BUTTON, HOT	1
6	3-145/00	ASSY, BIDET POP-UP ROD, 500/501 SERIES	1
6.1	P09007/00	K4160 POP UP GUIDE	1
6.2	10719/00	POP-UP ROD, 10-24, 14" LONG	1
6.3	P09006	SPECIAL HEX F/BIDET SPRAYER	1
6.4	P32010	9/16-20 x 56 NIPPLE FOR COMPRESSION STEM	1
6.5	P35026	3/4" SAE FLAT WASHER	1
6.6	10920/00	POP-UP KNOB, HEX TRADITIONAL	1
7	3-160	BIDET DIVERTER, COMPLETE	1

E

ZONE	REV.	DESCRIPTION	DATE	APPROVED
------	------	-------------	------	----------

REVISIONS

1261 LOGAN AVENUE
COSTA MESA, CALIFORNIA 92626
PHONE: 714.361.4800
FAX: 714.617.3120

PHYLIRICH®

Defining Luxury Since 1959

PROPRIETARY AND CONFIDENTIAL

THE INFORMATION CONTAINED IN THIS DRAWING IS THE SOLE PROPERTY OF RISS MANUFACTURING. ANY REPRODUCTION IN PART OR AS A WHOLE WITHOUT THE WRITTEN PERMISSION OF RISS MANUFACTURING IS PROHIBITED.

-	-	INTERPRET GEOMETRIC DIMENSIONING & TOLERANCING IN ACCORDANCE WITH ASME Y14.5-2009 & ASME Y14.41-2003 STANDARDS, UNLESS OTHERWISE SPECIFIED. DIMENSIONS ARE IN INCHES. TOLERANCES ARE:
NEXT ASSY	USED ON	FRACTIONS ±1/64"
APPLICATION		DECIMALS X.X: ±.1 X.XX: ±.01 X.XXX: ±.005
MATERIAL		ANGULAR ±5°
FINISH	NAME	DATE
	DRAWN	LLO 9/15/2015
	CHECKED	GRE
DO NOT SCALE DRAWING		

FOUR HOLE BIDET SET, CROSS HDLS, HEX TRAD

SIZE ASM/PRT NO. REV
A 500-60/00 -

SCALE: 1:5 WEIGHT: lbs. SHEET 1 OF 1

5

4

3

2

1